

**NEW**

**MADEIRA**

# Hoop-sized sustainability

with **E-Zee**  
**green**

Madeira's new **E-ZEE Green Cut** backing, made from 100% recycled polyester (rPES), is a great option for the environmentally conscious embroiderer.

## E-ZEE Green Cut 80

## E-ZEE Green Cut 45

colour



weight



80g/m<sup>2</sup>

45g/m<sup>2</sup>

cut away



make up



20cm x 100m | 30cm x 100m | 100cm x 100m

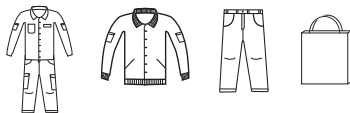
suitable for hoop sizes from 95mm to 195mm | suitable for hoop sizes from 215mm to 240 mm

material



**100% rPES, made from post-consumer PET bottles**

usage



medium to heavy woven fabrics with or without stretch | work overalls, jackets, denim or bags



light to heavy woven or knit fabrics with or without stretch | softshell jackets, sweatshirts, business wear

benefits



- Manufactured with rPES that uses less resources and energy than traditional oil-based fibre
- Allows you to create 100% sustainable embroidered designs when used with sustainable fabrics and threads

- Provides excellent stabilisation, particularly on stretch fabrics
- Won't slip on hoop, especially magnetic hoops

Do you have any questions?  
Scan QR-Code or contact us via  
[service@madeira.com](mailto:service@madeira.com)



STANDARD  
100  
23.HDE.10306  
Hohenstein HTTI



certified by ECOCERT Greenlife,  
Licence Number 240979,  
learn more at [TextileExchange.org/Standards](https://TextileExchange.org/Standards)